

Gi Boije 1072

1924
1752

Musical score for the first system. The treble staff contains chords with accents (>) above them. The bass staff contains single notes with fingerings: 1, II, VI, VII^o, I, VII^o, VI, VII^o.

Musical score for the second system. The treble staff contains chords. The bass staff contains single notes.

Musical score for the third system. The treble staff contains chords with accents (>) above them. The bass staff contains single notes with fingerings: I, IV.

Handwritten musical notation for the first system. The treble staff contains notes with stems and beams, including some with slurs. The bass staff contains notes with stems and beams. There are some handwritten markings below the bass staff, including a '1' and a checkmark.

Handwritten musical notation for the second system. The treble staff contains notes with stems and beams. The bass staff contains notes with stems and beams.

Handwritten musical notation for the third system. The treble staff contains notes with stems and beams. The bass staff contains notes with stems and beams.

Handwritten musical score for the first system. The treble staff contains dense chordal textures with various articulations like accents and slurs. The bass staff contains a simple melodic line with notes and rests. Roman numerals are written below the bass staff.

Handwritten musical score for the second system. The treble staff contains dense chordal textures. The bass staff contains a simple melodic line with notes and rests.

Handwritten musical score for the third system. The treble staff contains dense chordal textures with a "fel!" marking. The bass staff contains a simple melodic line with notes and rests.

Handwritten musical notation for the first system. The system consists of two staves: a treble clef staff on top and a bass clef staff on the bottom. The treble staff contains a sequence of notes and rests, with some notes appearing as vertical lines. The bass staff contains a sequence of notes and rests. There are two small '2' characters above the treble staff, one above the fourth measure and one above the sixth measure.

Handwritten musical notation for the second system. The system consists of two staves: a treble clef staff on top and a bass clef staff on the bottom. The treble staff contains a sequence of notes and rests. The bass staff contains a sequence of notes and rests.

A set of five empty musical staves, consisting of five horizontal lines.

A set of five empty musical staves, consisting of five horizontal lines.

Handwritten musical score for the first system. The treble clef staff contains a sequence of notes with various articulations: accents (v), slurs, and a fermata. The bass clef staff contains a simple accompaniment of quarter notes. Fingerings are indicated by numbers 1, 2, 3, 4, and 6. A brace on the left side groups the two staves.

Handwritten musical score for the second system. The treble clef staff continues the melodic line with notes and slurs. The bass clef staff continues the accompaniment. Fingerings are indicated by numbers 1 and 6. A brace on the left side groups the two staves.

Handwritten musical score for the third system. The treble clef staff contains notes with slurs and a fermata. The bass clef staff continues the accompaniment. The word "fel" is written in the space between the staves. Fingerings are indicated by numbers 1 and 2. A brace on the left side groups the two staves.

Handwritten musical notation on a grand staff. The top staff uses a treble clef and the bottom staff uses a bass clef. The music is written in three measures, with notes and rests. A large brace on the left side groups both staves together. The notes are mostly quarter notes, with some beamed eighth notes in the first measure. The bottom staff contains mostly quarter notes, with some rests.

A blank five-line musical staff.

A blank five-line musical staff.

A blank five-line musical staff.

A blank five-line musical staff.

Handwritten musical score for the first system. The top staff is in treble clef and contains a series of notes with various articulations (accents, slurs) and fingerings (1-4). The bottom staff is in bass clef and contains a series of notes with fingerings (II, III, IV, III, II, III). Below the bass staff, there are Roman numerals: IV, V, II, III, IV, III, II, III.

Handwritten musical score for the second system. The top staff is in treble clef and contains a series of notes with various articulations and fingerings (1-4). The bottom staff is in bass clef and contains a series of notes with fingerings (II, III).

Handwritten musical score for the third system. The top staff is in treble clef and contains a series of notes with various articulations and fingerings (1-4). The bottom staff is in bass clef and contains a series of notes with fingerings (II, III).

Handwritten musical score for the first system. The treble staff contains a sequence of chords and notes, with accents (v) above several notes. The bass staff contains a sequence of notes, with chord symbols V, VI, III, IV, V, IV written below. The system consists of eight measures.

Handwritten musical score for the second system. The treble staff contains a sequence of chords and notes. The bass staff contains a sequence of notes. The system consists of three measures.

Handwritten musical score for the third system. The treble staff contains a sequence of chords and notes, with an accent (v) above the first note. The bass staff contains a sequence of notes. The system consists of two measures.

Handwritten musical score for guitar, consisting of a grand staff with a treble clef on the upper staff and a bass clef on the lower staff. The score is divided into six measures by vertical bar lines. Above the treble staff, there are handwritten notes and chords, with small 'v' marks above some notes. The lower staff contains a sequence of chords indicated by Roman numerals: VI, VII^o, IV, V, IV, and V. The notes in the treble staff are mostly quarter notes, while the bass staff shows a simple bass line with quarter notes. The handwriting is in black ink on a white background.

A set of five empty musical staves, each consisting of five horizontal lines, arranged vertically.

A set of five empty musical staves, each consisting of five horizontal lines, arranged vertically.

A set of five empty musical staves, each consisting of five horizontal lines, arranged vertically.

A set of five empty musical staves, each consisting of five horizontal lines, arranged vertically.

Handwritten musical score for guitar and bass. The score consists of two staves: a treble clef staff (top) and a bass clef staff (bottom). The treble staff contains three measures of music, each marked with a checkmark (✓) above the first measure. The notes are: Measure 1: G4, B4, D5; Measure 2: G4, B4, D5; Measure 3: G4, B4, D5. The bass staff contains three measures of music, each marked with a checkmark (✓) above the first measure. The notes are: Measure 1: G2, B2; Measure 2: G2, B2; Measure 3: G2, B2. Below the bass staff, the Roman numerals V and VI are written under the first and second measures respectively. The score is written on a set of five-line staves.

Empty musical staff consisting of five horizontal lines.

Empty musical staff consisting of five horizontal lines.

Empty musical staff consisting of five horizontal lines.

Empty musical staff consisting of five horizontal lines.

Handwritten musical score for the first system. The treble staff contains a sequence of chords and notes, with some notes beamed together. The bass staff contains a sequence of notes, with some notes beamed together. The system concludes with a double bar line.

Handwritten musical score for the second system. The treble staff contains a sequence of chords and notes, with some notes beamed together. The bass staff contains a sequence of notes, with some notes beamed together. The system concludes with a double bar line.

Handwritten musical score for the third system. The treble staff contains a sequence of chords and notes, with some notes beamed together. The bass staff contains a sequence of notes, with some notes beamed together. The system concludes with a double bar line.

musical notation

Handwritten musical notation for the first system. The treble staff contains chords and melodic lines. The bass staff contains a bass line with a 11/7 time signature and a 'V' symbol.

Handwritten musical notation for the second system. The treble staff contains chords. The bass staff contains a bass line with a 11/7 time signature and fingerings.

Two sets of empty musical staves at the bottom of the page.

Handwritten musical notation for the first system. The treble staff contains six measures of chords. The bass staff contains six measures of single notes. A brace on the left groups both staves. Handwritten annotations "III 7" and "VI" are present below the bass staff.

Handwritten musical notation for the second system. The treble staff contains four measures of chords. The bass staff contains four measures of single notes. A brace on the left groups both staves. Handwritten annotations "III 7", "IV", and "II" are present below the bass staff.

Handwritten musical notation for the third system. The treble staff contains two measures of chords. The bass staff contains two measures of single notes. A brace on the left groups both staves. Handwritten annotations "III 7" and "I" are present below the bass staff.

Handwritten musical score for the first system. The treble staff contains complex chordal textures with many notes. The bass staff contains a simple bass line with notes and rests. Roman numerals and fingerings are written below the bass staff.

IV₂ V III III 7 6 5 3₄ I V

Handwritten musical score for the second system. The treble staff contains complex chordal textures. The bass staff contains a simple bass line with notes and rests. Roman numerals and fingerings are written below the bass staff.

I V I V

Handwritten musical score for the third system. The treble staff contains complex chordal textures. The bass staff contains a simple bass line with notes and rests. Roman numerals and fingerings are written below the bass staff.

6 II^o

Handwritten musical score for the first system. The treble staff contains a series of chords, some with accents, and a key signature change to two flats. The bass staff contains a melodic line with notes and rests. Chord symbols VI_7 and II° are written below the bass staff.

Handwritten musical score for the second system. The treble staff contains a series of chords, some with accents. The bass staff contains a melodic line with notes and rests. Chord symbols VI_7 , VII° , and V are written below the bass staff.

Handwritten musical score for the third system. The treble staff contains a series of chords, some with accents. The bass staff contains a melodic line with notes and rests. Chord symbols VI_7 , IV , and VI are written below the bass staff.

Handwritten musical notation for the first system. The treble staff contains three measures of chords. The bass staff contains three measures of chords with fingerings: 3, 1, 2, 6.

Handwritten musical notation for the second system. The treble staff contains three measures of chords. The bass staff contains three measures of chords with fingerings: 3, 4, 2, 6, 2, 4.

Handwritten musical notation for the third system. The treble staff contains three measures of chords. The bass staff contains three measures of chords with fingerings: 3, 4, 2, 4, 2, 6.

Handwritten musical score for the first system. The top staff is in treble clef and the bottom staff is in bass clef. The music consists of several measures with notes and rests. The notes are mostly quarter notes and half notes. There are some accidentals and dynamics markings. The system ends with a double bar line.

Handwritten musical score for the second system. The top staff is in treble clef and the bottom staff is in bass clef. The music consists of several measures with notes and rests. The notes are mostly quarter notes and half notes. There are some accidentals and dynamics markings. The system ends with a double bar line.

Handwritten musical score for the third system. The top staff is in treble clef and the bottom staff is in bass clef. The music consists of several measures with notes and rests. The notes are mostly quarter notes and half notes. There are some accidentals and dynamics markings. The system ends with a double bar line.

Handwritten musical score for the first system. The notation is on a grand staff with a treble clef on the upper staff and a bass clef on the lower staff. The music consists of chords and single notes with various fingerings and dynamics.

Upper staff notes (from left to right):
1. Chord: G4, B4, D5
2. Chord: G4, B4, D5
3. Chord: G4, B4, D5
4. Chord: G4, B4, D5
5. Chord: G4, B4, D5
6. Chord: G4, B4, D5
7. Chord: G4, B4, D5
8. Chord: G4, B4, D5
9. Chord: G4, B4, D5
10. Chord: G4, B4, D5
11. Chord: G4, B4, D5
12. Chord: G4, B4, D5
13. Chord: G4, B4, D5
14. Chord: G4, B4, D5
15. Chord: G4, B4, D5
16. Chord: G4, B4, D5
17. Chord: G4, B4, D5
18. Chord: G4, B4, D5
19. Chord: G4, B4, D5
20. Chord: G4, B4, D5
21. Chord: G4, B4, D5
22. Chord: G4, B4, D5
23. Chord: G4, B4, D5
24. Chord: G4, B4, D5
25. Chord: G4, B4, D5
26. Chord: G4, B4, D5
27. Chord: G4, B4, D5
28. Chord: G4, B4, D5
29. Chord: G4, B4, D5
30. Chord: G4, B4, D5
31. Chord: G4, B4, D5
32. Chord: G4, B4, D5
33. Chord: G4, B4, D5
34. Chord: G4, B4, D5
35. Chord: G4, B4, D5
36. Chord: G4, B4, D5
37. Chord: G4, B4, D5
38. Chord: G4, B4, D5
39. Chord: G4, B4, D5
40. Chord: G4, B4, D5
41. Chord: G4, B4, D5
42. Chord: G4, B4, D5
43. Chord: G4, B4, D5
44. Chord: G4, B4, D5
45. Chord: G4, B4, D5
46. Chord: G4, B4, D5
47. Chord: G4, B4, D5
48. Chord: G4, B4, D5
49. Chord: G4, B4, D5
50. Chord: G4, B4, D5
51. Chord: G4, B4, D5
52. Chord: G4, B4, D5
53. Chord: G4, B4, D5
54. Chord: G4, B4, D5
55. Chord: G4, B4, D5
56. Chord: G4, B4, D5
57. Chord: G4, B4, D5
58. Chord: G4, B4, D5
59. Chord: G4, B4, D5
60. Chord: G4, B4, D5
61. Chord: G4, B4, D5
62. Chord: G4, B4, D5
63. Chord: G4, B4, D5
64. Chord: G4, B4, D5
65. Chord: G4, B4, D5
66. Chord: G4, B4, D5
67. Chord: G4, B4, D5
68. Chord: G4, B4, D5
69. Chord: G4, B4, D5
70. Chord: G4, B4, D5
71. Chord: G4, B4, D5
72. Chord: G4, B4, D5
73. Chord: G4, B4, D5
74. Chord: G4, B4, D5
75. Chord: G4, B4, D5
76. Chord: G4, B4, D5
77. Chord: G4, B4, D5
78. Chord: G4, B4, D5
79. Chord: G4, B4, D5
80. Chord: G4, B4, D5
81. Chord: G4, B4, D5
82. Chord: G4, B4, D5
83. Chord: G4, B4, D5
84. Chord: G4, B4, D5
85. Chord: G4, B4, D5
86. Chord: G4, B4, D5
87. Chord: G4, B4, D5
88. Chord: G4, B4, D5
89. Chord: G4, B4, D5
90. Chord: G4, B4, D5
91. Chord: G4, B4, D5
92. Chord: G4, B4, D5
93. Chord: G4, B4, D5
94. Chord: G4, B4, D5
95. Chord: G4, B4, D5
96. Chord: G4, B4, D5
97. Chord: G4, B4, D5
98. Chord: G4, B4, D5
99. Chord: G4, B4, D5
100. Chord: G4, B4, D5

Lower staff notes (from left to right):
1. G2
2. G2
3. G2
4. G2
5. G2
6. G2
7. G2
8. G2
9. G2
10. G2
11. G2
12. G2
13. G2
14. G2
15. G2
16. G2
17. G2
18. G2
19. G2
20. G2
21. G2
22. G2
23. G2
24. G2
25. G2
26. G2
27. G2
28. G2
29. G2
30. G2
31. G2
32. G2
33. G2
34. G2
35. G2
36. G2
37. G2
38. G2
39. G2
40. G2
41. G2
42. G2
43. G2
44. G2
45. G2
46. G2
47. G2
48. G2
49. G2
50. G2
51. G2
52. G2
53. G2
54. G2
55. G2
56. G2
57. G2
58. G2
59. G2
60. G2
61. G2
62. G2
63. G2
64. G2
65. G2
66. G2
67. G2
68. G2
69. G2
70. G2
71. G2
72. G2
73. G2
74. G2
75. G2
76. G2
77. G2
78. G2
79. G2
80. G2
81. G2
82. G2
83. G2
84. G2
85. G2
86. G2
87. G2
88. G2
89. G2
90. G2
91. G2
92. G2
93. G2
94. G2
95. G2
96. G2
97. G2
98. G2
99. G2
100. G2

Handwritten annotations below the lower staff:
1. 11_7
2. \checkmark
3. 5
4. 3
5. 4
6. 2
7. 6
8. 5
9. 3
10. 4
11. 2
12. 6
13. 5
14. 3
15. 4
16. 2
17. 6
18. 5
19. 3
20. 4
21. 2
22. 6
23. 5
24. 3
25. 4
26. 2
27. 6
28. 5
29. 3
30. 4
31. 2
32. 6
33. 5
34. 3
35. 4
36. 2
37. 6
38. 5
39. 3
40. 4
41. 2
42. 6
43. 5
44. 3
45. 4
46. 2
47. 6
48. 5
49. 3
50. 4
51. 2
52. 6
53. 5
54. 3
55. 4
56. 2
57. 6
58. 5
59. 3
60. 4
61. 2
62. 6
63. 5
64. 3
65. 4
66. 2
67. 6
68. 5
69. 3
70. 4
71. 2
72. 6
73. 5
74. 3
75. 4
76. 2
77. 6
78. 5
79. 3
80. 4
81. 2
82. 6
83. 5
84. 3
85. 4
86. 2
87. 6
88. 5
89. 3
90. 4
91. 2
92. 6
93. 5
94. 3
95. 4
96. 2
97. 6
98. 5
99. 3
100. 4

Handwritten musical score for the second system. The notation is on a grand staff with a treble clef on the upper staff and a bass clef on the lower staff. The music continues with chords and single notes, including some dynamic markings.

Upper staff notes (from left to right):
1. Chord: G4, B4, D5
2. Chord: G4, B4, D5
3. Chord: G4, B4, D5
4. Chord: G4, B4, D5
5. Chord: G4, B4, D5
6. Chord: G4, B4, D5
7. Chord: G4, B4, D5
8. Chord: G4, B4, D5
9. Chord: G4, B4, D5
10. Chord: G4, B4, D5
11. Chord: G4, B4, D5
12. Chord: G4, B4, D5
13. Chord: G4, B4, D5
14. Chord: G4, B4, D5
15. Chord: G4, B4, D5
16. Chord: G4, B4, D5
17. Chord: G4, B4, D5
18. Chord: G4, B4, D5
19. Chord: G4, B4, D5
20. Chord: G4, B4, D5
21. Chord: G4, B4, D5
22. Chord: G4, B4, D5
23. Chord: G4, B4, D5
24. Chord: G4, B4, D5
25. Chord: G4, B4, D5
26. Chord: G4, B4, D5
27. Chord: G4, B4, D5
28. Chord: G4, B4, D5
29. Chord: G4, B4, D5
30. Chord: G4, B4, D5
31. Chord: G4, B4, D5
32. Chord: G4, B4, D5
33. Chord: G4, B4, D5
34. Chord: G4, B4, D5
35. Chord: G4, B4, D5
36. Chord: G4, B4, D5
37. Chord: G4, B4, D5
38. Chord: G4, B4, D5
39. Chord: G4, B4, D5
40. Chord: G4, B4, D5
41. Chord: G4, B4, D5
42. Chord: G4, B4, D5
43. Chord: G4, B4, D5
44. Chord: G4, B4, D5
45. Chord: G4, B4, D5
46. Chord: G4, B4, D5
47. Chord: G4, B4, D5
48. Chord: G4, B4, D5
49. Chord: G4, B4, D5
50. Chord: G4, B4, D5
51. Chord: G4, B4, D5
52. Chord: G4, B4, D5
53. Chord: G4, B4, D5
54. Chord: G4, B4, D5
55. Chord: G4, B4, D5
56. Chord: G4, B4, D5
57. Chord: G4, B4, D5
58. Chord: G4, B4, D5
59. Chord: G4, B4, D5
60. Chord: G4, B4, D5
61. Chord: G4, B4, D5
62. Chord: G4, B4, D5
63. Chord: G4, B4, D5
64. Chord: G4, B4, D5
65. Chord: G4, B4, D5
66. Chord: G4, B4, D5
67. Chord: G4, B4, D5
68. Chord: G4, B4, D5
69. Chord: G4, B4, D5
70. Chord: G4, B4, D5
71. Chord: G4, B4, D5
72. Chord: G4, B4, D5
73. Chord: G4, B4, D5
74. Chord: G4, B4, D5
75. Chord: G4, B4, D5
76. Chord: G4, B4, D5
77. Chord: G4, B4, D5
78. Chord: G4, B4, D5
79. Chord: G4, B4, D5
80. Chord: G4, B4, D5
81. Chord: G4, B4, D5
82. Chord: G4, B4, D5
83. Chord: G4, B4, D5
84. Chord: G4, B4, D5
85. Chord: G4, B4, D5
86. Chord: G4, B4, D5
87. Chord: G4, B4, D5
88. Chord: G4, B4, D5
89. Chord: G4, B4, D5
90. Chord: G4, B4, D5
91. Chord: G4, B4, D5
92. Chord: G4, B4, D5
93. Chord: G4, B4, D5
94. Chord: G4, B4, D5
95. Chord: G4, B4, D5
96. Chord: G4, B4, D5
97. Chord: G4, B4, D5
98. Chord: G4, B4, D5
99. Chord: G4, B4, D5
100. Chord: G4, B4, D5

Lower staff notes (from left to right):
1. G2
2. G2
3. G2
4. G2
5. G2
6. G2
7. G2
8. G2
9. G2
10. G2
11. G2
12. G2
13. G2
14. G2
15. G2
16. G2
17. G2
18. G2
19. G2
20. G2
21. G2
22. G2
23. G2
24. G2
25. G2
26. G2
27. G2
28. G2
29. G2
30. G2
31. G2
32. G2
33. G2
34. G2
35. G2
36. G2
37. G2
38. G2
39. G2
40. G2
41. G2
42. G2
43. G2
44. G2
45. G2
46. G2
47. G2
48. G2
49. G2
50. G2
51. G2
52. G2
53. G2
54. G2
55. G2
56. G2
57. G2
58. G2
59. G2
60. G2
61. G2
62. G2
63. G2
64. G2
65. G2
66. G2
67. G2
68. G2
69. G2
70. G2
71. G2
72. G2
73. G2
74. G2
75. G2
76. G2
77. G2
78. G2
79. G2
80. G2
81. G2
82. G2
83. G2
84. G2
85. G2
86. G2
87. G2
88. G2
89. G2
90. G2
91. G2
92. G2
93. G2
94. G2
95. G2
96. G2
97. G2
98. G2
99. G2
100. G2

Handwritten annotations below the lower staff:
1. 11_7
2. \checkmark
3. 111
4. 1

Two sets of empty musical staves at the bottom of the page, each consisting of a grand staff with a treble clef on the upper staff and a bass clef on the lower staff.

Handwritten musical score for the first system. The treble staff contains a series of chords, each represented by a vertical line of notes. The bass staff contains a series of notes, some with fingerings (1, 2, 3, 4, 5) and some with a '2' above them. The system is marked with a treble clef and a key signature of one flat (Bb). The first measure is marked with a '7' and a 'VI'.

Handwritten musical score for the second system. The treble staff contains a series of chords, each represented by a vertical line of notes. The bass staff contains a series of notes, some with fingerings (1, 2, 3, 4, 5) and some with a '2' above them. The system is marked with a treble clef and a key signature of one flat (Bb). The first measure is marked with a '7' and a 'IV'. The system ends with a double bar line.

Handwritten musical score for the third system. The treble staff contains a series of chords, each represented by a vertical line of notes. The bass staff contains a series of notes, some with fingerings (1, 2, 3, 4, 5) and some with a '2' above them. The system is marked with a treble clef and a key signature of two flats (Bb, Eb). The first measure is marked with a '7' and a 'I'.

Handwritten musical score for guitar, consisting of a treble clef staff and a bass clef staff. The score is divided into two systems, each containing six measures. The first system includes the following chords and fingerings:

- Measure 1: IV_7 (F major 7) with fingerings 5, 3, 4, 2.
- Measure 2: III (E major) with fingerings 4, 4, 2.
- Measure 3: VI (D major) with fingerings 2, 2, 2.
- Measure 4: V_{11}^0 (C major 11) with fingerings 5, 6, 3, 2, 6.
- Measure 5: IV (F major) with fingerings 3, 6, 2, 2, 6.
- Measure 6: III (E major) with fingerings 2, 2, 6.

The second system consists of six empty staves.

Handwritten musical score for the first system. The treble staff contains a series of chords, many with a fermata. The bass staff contains single notes with fingerings (1-5) and some double notes. There are some ink smudges in the third measure of the treble staff.

VI₇ II

Handwritten musical score for the second system. The treble staff contains a series of chords, many with a fermata. The bass staff contains single notes with fingerings (1-5) and some double notes. There are some ink smudges in the fourth measure of the treble staff.

VI₇ VII°

V

Handwritten musical score for the third system. The treble staff contains a series of chords, many with a fermata. The bass staff contains single notes with fingerings (1-5) and some double notes. There are some ink smudges in the fourth measure of the treble staff.

VI₇ IV

VI

ince b d la
1 2 5 7 2 4 6 1

d f a c b a g f e d c
1 2 5 7 2 4 6 1

Handwritten musical notation on a five-line staff. It begins with a treble clef. The notes are: a half note G4, a quarter note A4, a quarter note B4, a quarter note C5, and a quarter note B4. There are some faint markings above the staff.

Handwritten musical notation on a five-line staff. It begins with a treble clef. The notes are: a half note G4, a quarter note A4, and a quarter note B4. There are some faint markings above the staff.

Handwritten musical notation on a five-line staff. It begins with a treble clef. The notes are: a half note G4, a quarter note A4, and a quarter note B4. There are some faint markings above the staff.

Handwritten musical notation on a five-line staff. It begins with a treble clef. The notes are: a half note G4, a quarter note A4, and a quarter note B4. There are some faint markings above the staff.

Handwritten musical notation on a five-line staff. It begins with a treble clef. The notes are: a half note G4, a quarter note A4, a quarter note B4, a quarter note C5, and a quarter note B4. There are some faint markings above the staff.

Handwritten musical notation on a five-line staff. It begins with a treble clef. The notes are: a half note G4, a quarter note A4, a quarter note B4, a quarter note C5, and a quarter note B4. There are some faint markings above the staff.

A large, dense block of handwritten musical notation on a five-line staff. It begins with a treble clef. The notation is very complex, with many notes, stems, and some markings that are difficult to decipher. It appears to be a continuation of the piece or a different section. The notes are mostly quarter and eighth notes, with some beamed together. There are also some markings that look like 'x' or 'y' above the notes.

Handwritten musical score on five staves. The notation is dense and includes various symbols, clefs, and accidentals. The first staff begins with a treble clef and a 6/8 time signature. The notation consists of rhythmic patterns and notes, with some notes marked with sharp (#) and flat (b) symbols. The second staff continues the notation, featuring a key signature change to one sharp (F#) and a 2/4 time signature. The third and fourth staves show further development of the musical ideas, with some notes grouped in parentheses. The fifth staff contains a few final notes and rests. The handwriting is somewhat hurried and includes some corrections and scribbles.

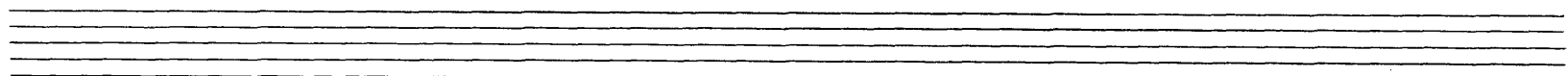
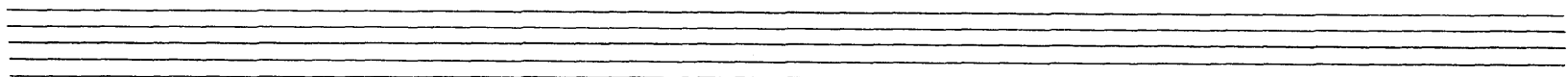
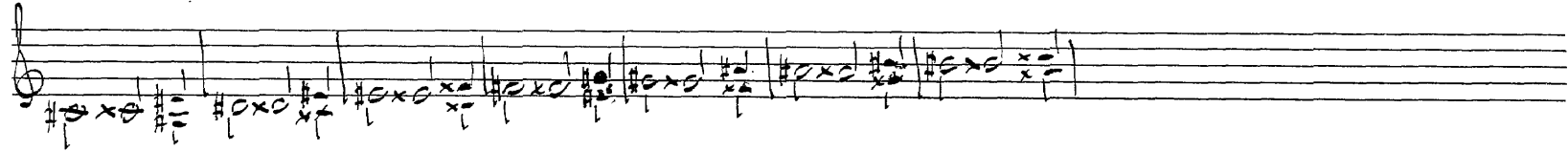
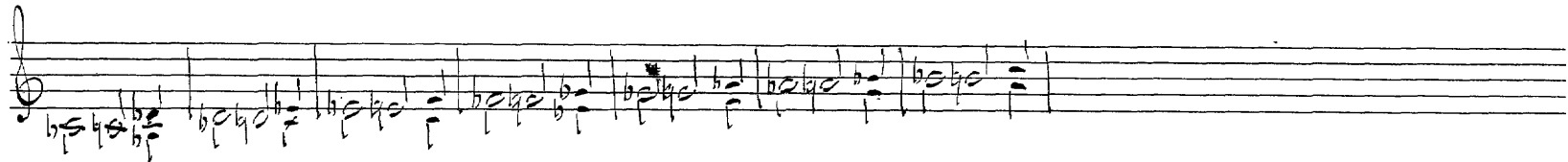
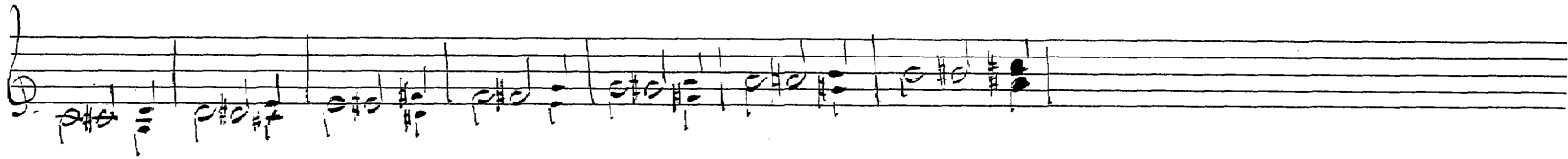
Handwritten musical notation on two staves. The notation is dense and appears to be a form of shorthand or tablature, possibly for guitar or piano. It consists of various symbols, including vertical lines, dots, and horizontal strokes, arranged in a way that suggests a sequence of notes or chords. The top staff begins with a treble clef and a key signature of one sharp (F#). The bottom staff begins with a bass clef and a key signature of one sharp (F#). The notation is written in black ink on a white background.

A single empty musical staff with five horizontal lines.

A single empty musical staff with five horizontal lines.

A single empty musical staff with five horizontal lines.

A single empty musical staff with five horizontal lines.



litar 2

Handwritten musical score for 'litar 2'. It consists of three staves. The top staff is in treble clef with a key signature of one flat (B-flat). The middle and bottom staves are in bass clef with a key signature of two sharps (D major). The music features a complex rhythmic pattern with many eighth and sixteenth notes, and includes several 'x' marks above notes, likely indicating fingerings or specific articulations. The notation is dense and appears to be a single melodic line with accompaniment.

chr 2

Handwritten musical score for 'chr 2'. It consists of three staves. The top staff is in treble clef with a key signature of one flat (B-flat). The middle and bottom staves are in bass clef with a key signature of two sharps (D major). The music features a complex rhythmic pattern with many eighth and sixteenth notes, and includes several 'x' marks above notes, likely indicating fingerings or specific articulations. The notation is dense and appears to be a single melodic line with accompaniment.

2. Hand 1

form. 3

Handwritten musical notation for Form 3, first system. The staff contains a sequence of notes and chords, including a prominent chord with a sharp sign (#) and a flat sign (b). The notation is dense and includes various accidentals and clefs.

1. part. 3

Handwritten musical notation for Form 3, first part, second system. This system consists of two staves. The upper staff continues the melodic line with various notes and accidentals. The lower staff provides a harmonic accompaniment with chords and rhythmic patterns.

form. 4

Handwritten musical notation for Form 4, second system. This system also consists of two staves. The upper staff features a melodic line with several flat accidentals (b). The lower staff continues the harmonic accompaniment with chords and rhythmic patterns.

G

Gis

A

As

H

B

op. 10. 12